



WEBFOOTER EXTRA

January 2013



HAPPY NEW YEAR



WEBFOOTERS POST CARD CLUB

PO Box 17240
Portland OR 97217-0240



www.thewebfooters.com



In this issue

See the story of Yaw's - The House That Hamburger Built on pg 4

Located at:

FARMHOUSE ANTIQUES



8028 SE 13th Avenue in Historic Sellwood 503-232-6757

Tuesday thru Sunday: 11 to 5

(paid advertisement)

**THANKS TO OUR ADVERTISERS FOR THEIR
SUPPORT WHICH HELPS OFFSET OUR EXPENSES**

33RD ANNUAL
ANTIQUÉ PAPER SHOW
APRIL 20-21, 2013 KLIEVER ARMORY - 10000 NE 33RD DRIVE - PORTLAND, OR
WEBFOOTERS POST CARD CLUB FREE ADMISSION - FREE PARKING WWW.THEWEBFOOTERS.COM



Northwest Collectibles Presents

The Largest Antique Paper Shows in the Northwest

**The Greater Portland
Postcard, Stamp & Paper
Collectibles Show**

February 16 and 17, 2013

**Kliever Armory
10000 NE 33rd Drive
Portland, Oregon**

**The Greater Seattle
Postcard & Paper
Collectibles Show**

February 9 and 10, 2013

**Kent Commons
525 4th Avenue N
Kent, Washington**

Old Postcards, Photographs, Stereo View Cards, Books,
Stamps, Valentines, Matchbooks, Magazines, Prints
Maps, Trade Cards, Movie Posters and Much More!

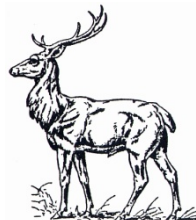
Show Hours:

Saturday: 10 am to 6 pm
Sunday: 10 am to 4 pm

Admission: \$5 (Good both days)

Upcoming Shows:

Portland, Oregon
At Lloyd Center Doubletree
June 15 and 16, 2013



Kent, Washington
At Kent Commons
June 22 and 23, 2013

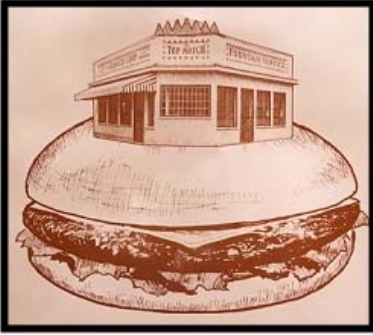
Call or Write:

Terry Weis
601 NW 72nd Circle
Vancouver, WA 98665-8462
503-679-4755

Jeremy LeRoque
5881 Live Oak Ln
Redding, CA 96001-4617
626-665-9435

www.postcardshows.com

FREE APPRAISALS
FREE ADMISSION WITH THIS FLYER
(paid advertisement)



AMERICA'S DRIVE-IN

YAW'S TOP NOTCH

THE HOUSE THAT HAMBURGER BUILT

We started here

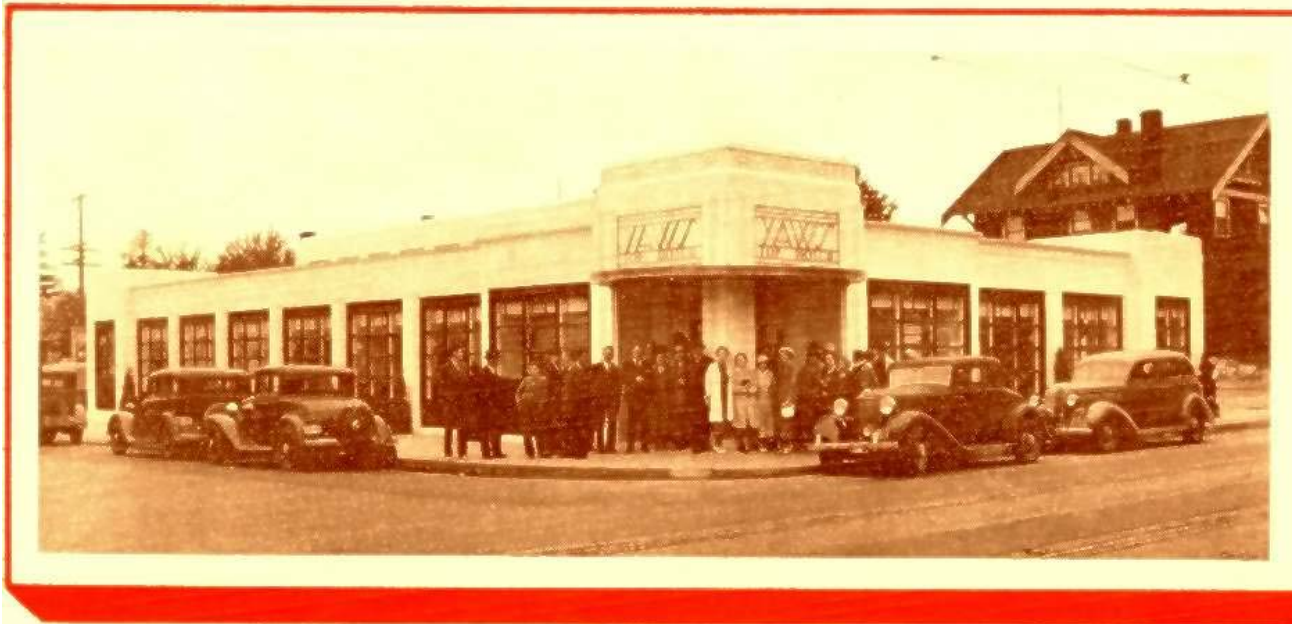


JULY 24, 1926 • 1819 NE 41ST AVE.

The first location of Yaw's Top Notch Restaurant opened on July 24, 1926. It began as a small 14-stool restaurant on NE 41st Avenue just off Sandy Blvd. Yaw's was famous for its burgers, gravy fries and berry tarts. This building was expanded four times in its first four years.

Restaurants and confectionaries have always been popular subjects for postcards, photos and advertising. One of Oregon's longtime eateries, Yaw's Top Notch, was very popular and it served several generations of Portlanders. W.P. and Grace Yaw opened Yaw's Top Notch Restaurant on July 24, 1926. Soon thereafter Englebert Franz of Portland's Franz Bakery developed the very first hamburger bun at the request of Yaw's Restaurant.

1st completely air-conditioned restaurant in Portland



JUNE 6, 1936 • 1901 NE 42ND AVE.

On June 6, 1936, Yaws Top Notch opened in their new location at NE 42nd and Hancock Street which was a block away from their old location.



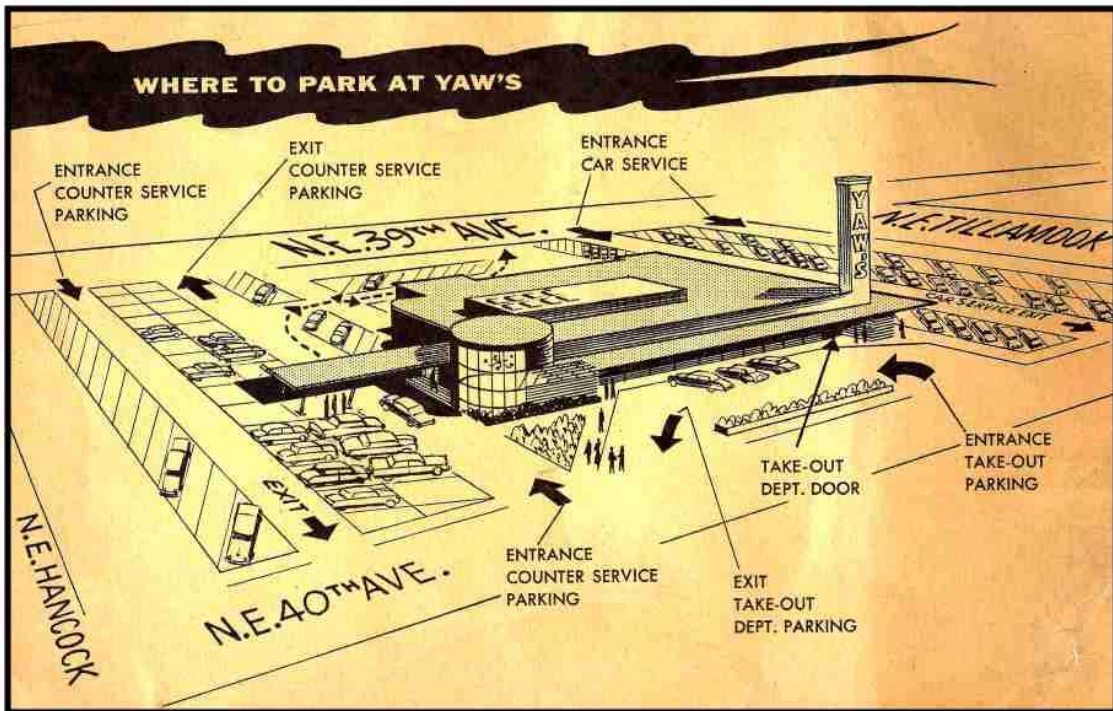
Yaw's built their reputation on quality service and good food. Car hop service was added in 1941 and the Take-Out Department opened in 1952.



Interior view of Yaw's Top Notch at 1901 NE 42nd Ave.



Some of the helpful Top Notch staff that greeted customers.



In 1955, Yaw's opened a new restaurant at 2001 NE 40th Ave at Tillamook St.



Yaw's Top Notch became the place to be or be seen for hundreds of local high school youth. Bob Svilar the "Tootsie Roll Cop" handed out tootsie rolls to the youth who cruised into the restaurant.



The new restaurant housed Take-Out Service, Car Hop Service and Counter Service. They advertised: “W.G.O.O. (We Grind Our Own) fully-aged steer beef.”



When you drove up for Car Service, a waitress on roller skates would take your order.

DAILY
 FROM JULY 1, 1947, TO JULY 1, 1948
 We were privileged to serve you

- 610 POUNDS OF HAMBURGER
- 2659 BUNS
- 2212 PIECES OF PIE
- 2707 CUPS OF COFFEE

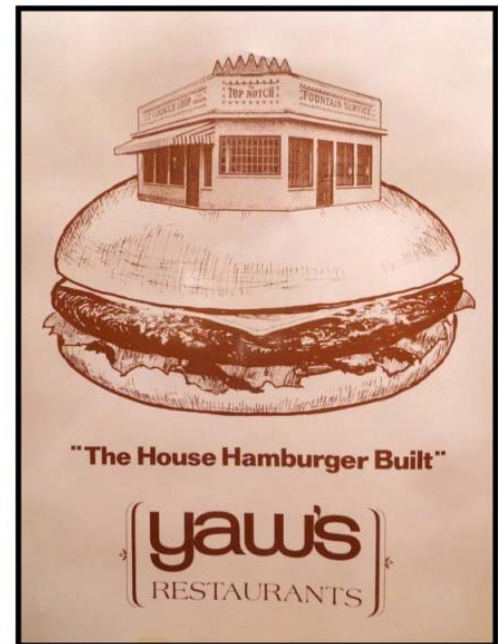
YAW'S TOP NOTCH
 42ND AND SANDY BOULEVARD—ALMOST
 PORTLAND 13, OREGON

W. G. O. O.
 Assures you that each
 day in our own kitchen
We Grind Our Own
 highest quality, fully-aged steer beef, and
 serve you a *healthful* as well as *delicious*
YAW'S TOP NOTCH Hamburger
 In addition, every bit of the *delicious*
 juice of this select meat is brought
 to you through proper *Broiling*.

In 1977, Yaw's celebrated 51 years of service and they calculated that they had served:

28,305,000 people, 7,337,215 pounds of hamburger on 33,620,818 buns.

They sold 40,623,726 cups of coffee and 26,176,270 pieces of pie.



Classic Menus from Yaw's Top Notch.

During the 1970s, Yaw's branched out to several other locations. There was Yaw's Ham-Bur-Beef Gateway at 10711 NE Halsey Street and Yaw's Raleighwest at 6443 SW Beaverton-Hillsdale Highway near Raleigh Hills. They also opened Yaw's Sports Page Lounge at the Raleigh Hills location. For a while, Yaw's restaurant and Bakery was located at NW 23rd and Burnside.

After serving quality food for 56 years, Yaw's closed in 1982. Fast forward 30 years to September 2012 and Steve Yaw, grandson of W.P. Yaw, opened the new Yaw's Top Notch at 11340 NE Halsey Street after several years of raising capital, preparation and construction. After a grand opening in mid-October, they are fine tuning their operation. Even though I am a native Portlander, I hadn't set foot in a Yaw's Restaurant until the day after Christmas in 2012.

My first Yaw's experience was one to be remembered. They have always been known for serving quality hamburgers and steakburgers, but I am not able to eat beef, so I was very pleased to be able to order a grilled chicken sandwich, which was never on the original menu. I highly recommend the grilled chicken which is priced very frugally in today's market. Tastes have changed in 30 years.

Yaw's was always known for their ice cream and shakes. They have several mouth-watering flavors including Butterfinger and peanut butter. Their fries do not need ketchup. They are famous for green river lime soda drinks and hand-made pies are promised when they have been perfected.